

VISION:

Greenway from Knoxville to the Smokies

Imagine riding on a bicycle trail from Alcoa or Maryville to downtown Knoxville. Or to Townsend and the edge of the Great Smoky Mountains National Park.

Now do more than imagine it. Join us in creating a greenway from Knoxville to the Smokies. Check out the Vision Map to see where this greenway could take you.

A work in progress

A greenway from downtown Knoxville to the Knox/Blount County line is already planned and funded. The City of Knoxville completed the segment to Marine Park in 2015. The rest will be constructed through a combination of projects, including the widening of Alcoa Highway.

Completing the vision

We've created a concept plan for how the greenway will continue through Blount County, tying into the Alcoa and Maryville greenway. A detailed plan for linking Maryville to Townsend via greenways has also been completed. Visit our website (below) for details and for the latest regional greenway news.

GREAT SMOKY MOUNTAINS

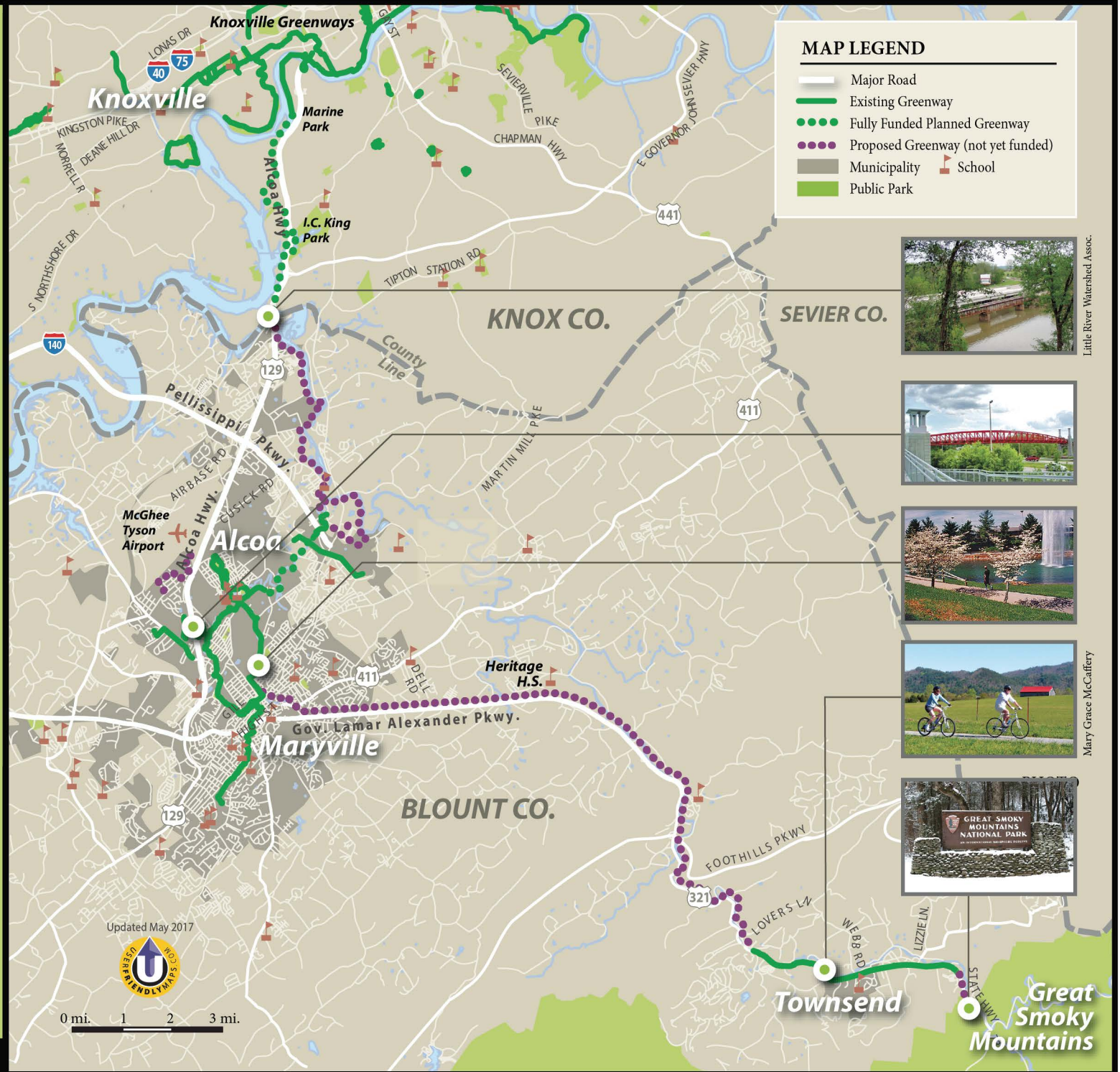


REGIONAL GREENWAY COUNCIL

Updated May 2017



0 mi. 1 2 3 mi.



Little River Watershed Assoc.



Mary Grace McCaffery

